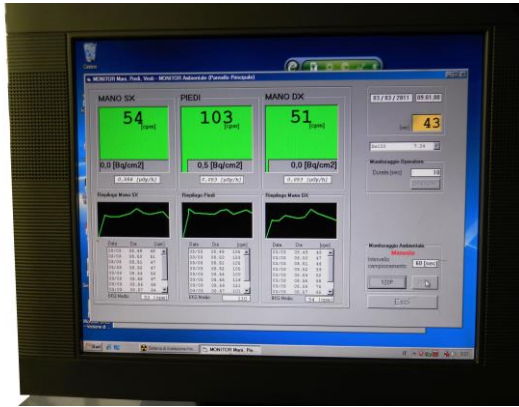


l'acn S.r.l. Via XXV Aprile 9/13 20023 Cerro Maggiore-MI Tel. 0331 420303	GammaMEP Hand Foot Clothes Monitor	GMP/TEC/01
		Rev. 01 del 16-01-12
		Pag.1 di 2

Hand Foot Clothes Monitor gammaMEP and gammaMEP Compact



(*) Example: Area monitoring mode - execution sample

gammaMEP is the state-of-the-art hand foot clothes monitor. It can detect with high efficiency all of the most commonly used radioactive tracers used in nuclear medicine departments.

The device is totally controlled by software (a windows based PC is supplied) , allowing a comprehensive management of detector configuration and archive of effected measures.



(*) gammaMEP

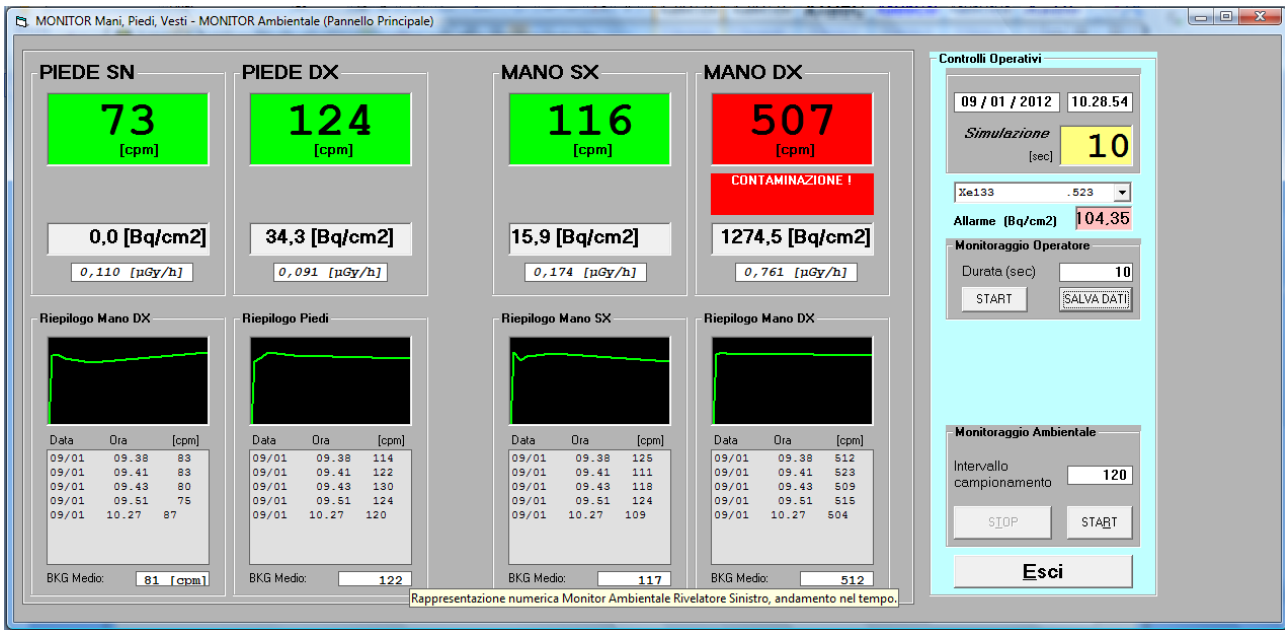


(*) gammaMEP Compact



Description

- Footboard size: 50 cm x 30 cm approx.
- Available in argon filled G.M. detectors version (gamma probes) and in plastic scintillator detectors versions (alpha + beta + gamma probes)
- Detection system: 2 removable hand/cloth probes and 2 fixed foot probes;
- Digital counting electronics , 3 independent channels, user selectable measure time, user selectable alarm thresholds for each channel;
- Logical procedure of measurements: it is impossible to carry out a measure if not in correct position;
- Rs-232 pc-link;
- Windows based software for data acquisition analysis;
- Storage of measures on internal database (MS Access);
- Password protected access for each operator;
- Graphical display of acquired results for each operator;
- Automatic background subtraction;
- Daily report printout for each operator
- Windows XP, Windows 7, Windows 8 compatible
- Color inkjet printer



Main Window – execution sample

(*) TECHNICAL SPECIFICATIONS (gammaMEP and gammaMEP Compact versions)

DETECTORS:	4 G.M. probes based on LND-743 gamma detectors. (Alternative) 4 plastic scintillator probes (alpha+beta+gamma detectors) based on SCIONIX VS-0958-20 detectors. The two hand probes are extractable and can be used for cloth checking.
EFFICIENCY:	better than 8% on Co-60, better than 10% on Cs-137 (gamma detectors)
MIN. DETECTABLE ACTIVITY:	better than 1 Bq/cm ²
MEASURE UNITS:	cpm, Bq/cm ² , μGy/h
SOFTWARE LANGUAGE:	English/Italian
SOFTWARE FUNCTIONS:	- automatic background subtraction - alarm threshold settings for each detector - optical and acoustical alarm signal - cps or Bq/cm ² display for each specific nuclide color inkjet
PRINTER:	steel, easily washable and decontaminable surfaces
FRAME:	50 x 30 cm approx..
FOOTBOARD SIZE:	GammaMEP 68x110x125 cm (WxLxH), excluded PC monitor
BULK SIZE:	GammaMEP Compact 74x51x135 cm (WxLxH), excluded Laptop
OPERATING SYSTEM	Windows XP professional, Windows 7 or Windows 8 (as per user choice)
SUPPLY POWER:	230 V AC 50 Hz monophase , 0.25 A (excluded PC power)

* Specifications may be subject to change without notice